

**THE EVOLUTION OF THE AGRICULTURAL SURFACE AND  
CROP PRODUCTION DURING 2000-2010 IN THE BUCHAREST-  
ILFOV AREA**

**EVOLUTIA SUPRAFETEI SI PRODUCȚIEI AGRICOLE  
VEGETALE IN PERIOADA 2000-2010 IN REGIUNEA BUCURESTI-  
ILFOV**

**RALUCA NECULA<sup>1</sup>, DIANA NECULA<sup>2</sup>**

*<sup>1</sup>University of Agricultural Sciences and Veterinary Medicine, Bucharest,  
Romania; raluca\_nec@yahoo.com*

*<sup>2</sup>Research Institute for Agricultural Economics and Rural Development,  
Bucharest, Romania*

***Abstract:** Bucharest Ilfov Region Agriculture still occupies an important place, having large reserves of development, determined by soil quality, climate factors, technical equipment and materials and labor (or work within major research institutes in the field). However, productivity is lower productivity sector registered in EU countries due to insufficient technical equipment, small scale agricultural enterprises, which represent obstacles to effective development. Also, irrigation systems are underdeveloped.*

***Key words:** agriculture, crops, evolution, statistical datas*

**INTRODUCTION**

Bucharest-Ilfov Region, established in Bucharest - the capital of Romania - and the county Ilfov, is located in the south central part of the Romanian Plain. The total area of Bucharest-Ilfov region is 1821 km, of which 13.1% is the administrative area of Bucharest and Ilfov County 86.9%. The two entities that make up the region and are also the smallest territorial administrative units of Romania in terms of the extent.

**MATERIALS AND METHODS**

The data analyzed in the following tables are taken from the National Institute of Statistics and interpreted (as indicators in series and in

*FACULTATEA DE MANAGEMENT AGRICOL*

chain) taking as reference the year 2000, showing the evolution or involution of the main crops and agricultural production.

**RESULTS AND DISCUSSIONS**

In Table 1 are the main crops in the region and the evolution of the cultivated area in the period 2000-2010. It can be seen easily that the cultivated areas have decreased very much. In this regard, we have for example the cereals grain which fell to 41.3% in 2010, barley and barley with 29.5%, while the biggest drop it has recorded the bean crop of approximately 87.9%. Significant increases were recorded in crops of peas for about 10% , with about 17% at oil plants in 2010 compared to 2000.

**The area cultivated with the main crops during 2000-2010 (2000 = 100%) Table 1.**

MAIN CROPS	2000	2001	2002	2003	2004	2005	2006	2007	2008	2009	2010
TOTAL	100	105	106.3	102.8	104.1	96.7	81.3	76.5	55.1	56	65.2
GRAIN CEREALS	100	115.8	112.1	99	116.8	105	76.9	84.4	52.3	52.4	58.7
WHEAT AND RYE	100	140.7	126.3	111.5	110.9	120.4	81.4	82.1	65	62.7	74.7
BARLEY	100	142.6	152.4	55.6	146.7	122.1	74.4	110.9	61.8	77.2	70.5
CORN	100	91.2	91.5	96.9	113.6	88.4	71.8	66.9	38.5	37.7	42.1
GRAIN LEGUMES	100	115.1	179.2	115.8	32.2	75.1	29	27.1	15.5	32.8	58
PEA BEANS	100	186.8	193.1	147.9	70.1	100	23.6	59.7	13.2	59.7	109.7
OIL PLANTS	100	96.5	126.1	154.9	144.9	120.2	123.4	91	85.3	84.4	116.6

Source: Calculations based on data from Statistical Yearbook of Romania 2001-2010

LUCRĂRI ȘTIINȚIFICE, SERIA I, VOL. XIV (1)

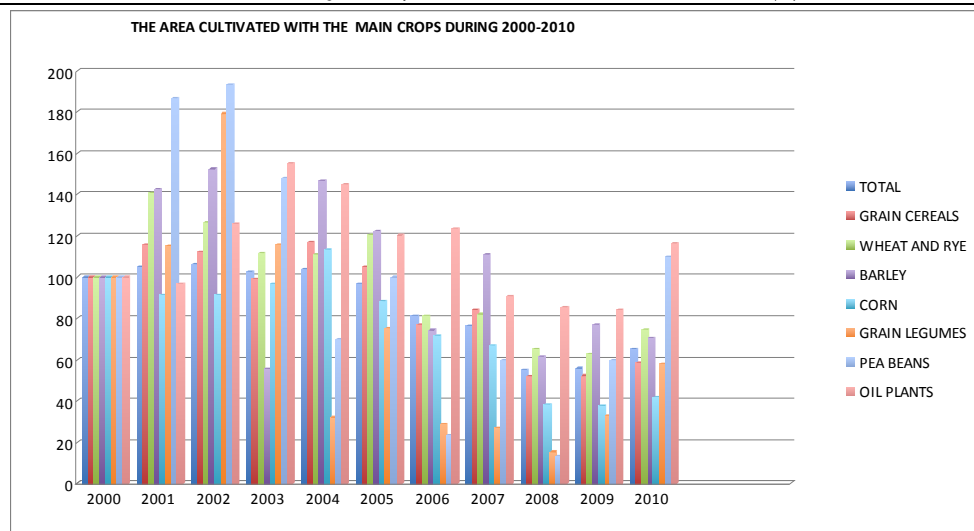


Figure 1. The area cultivated with the main crops during 2000-2010

An evolution has occurred at the total production (table 2.) achieved for the main crops in the region, particularly in cereal grains which has an increase of approximately 29% in 2010 compared to the reference year, the rye increased by about 40% and corn reveals a large increase in production in 2004 being a particularly good year in terms of all vegetable productions obtained.

Table 2.

Total production for the main crops obtained in the period 2000-2010 (2000 = 100%)

MAIN CROPS	2000	2001	2002	2003	2004	2005	2006	2007	2008	2009	2010
GRAIN CEREALS	100	249.4	161.6	118.4	341.7	239.2	196.3	52.1	107.1	88.3	129.1
WHEAT AND RYE	100	175.0	79.9	31.9	150.3	138.7	104.7	33.1	88.5	56.2	90.7
BARLEY	100	203.8	49.9	16.3	191.1	129.7	73.5	51.7	54.0	74.9	74.9
CORN	100	560.2	565.6	524.1	1165.3	700.2	630.9	85.8	209.6	204.9	307.6
GRAIN LEGUMES	100	320.8	149.4	234.6	55.4	107.6	55.7	28.0	21.7	56.9	103.8
OIL PLANTS	100	164.1	218.9	199.6	349.5	165.2	212.4	66.9	137.9	174.4	256.6

Source: Calculations based on data from Statistical Yearbook of Romania 2001-2010

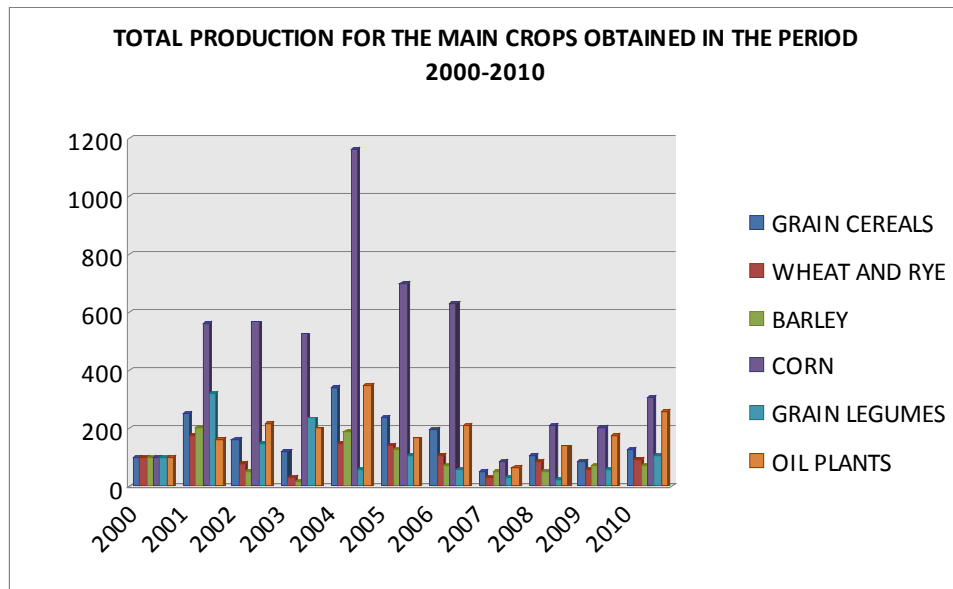


Figure 2. Total production for the main crops obtained in the period 2000-2010

We will present some statistical data on average production per hectare (figure 3) for the main crops in Bucharest-Ilfov region in the period 2000-2010, interval in which the production had some large fluctuations. Therefore, across countries, wheat production decreased by about 70% in 2003, then increase to 35.65% in 2004 compared with 2000 taken as reference year. In 2010 there is an increase at cereal grains of about 100% , with 21.37% at wheat, maize production increasing by about 7 times compared to 2000.

Year 2007 is a special case due to adverse weather conditions, the agricultural year was characterized by low crop production, both in the region and across the country. The involution of total production is the cumulative effect of the decrease of cultivated areas in the the analyzed period and of the reduction of the average production at the same time.

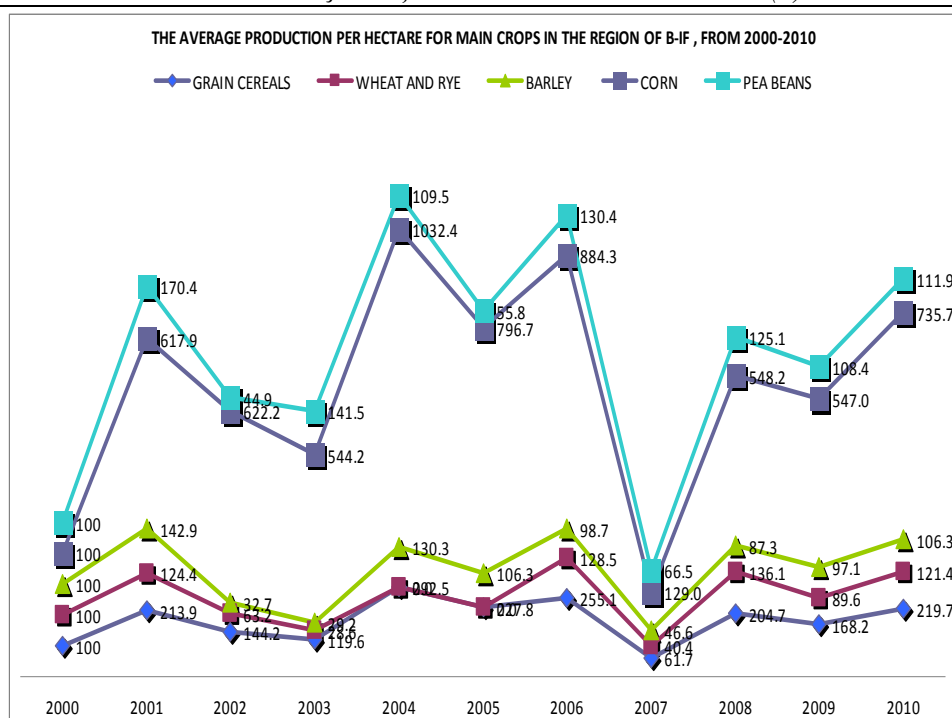


Figure 3. The average production per hectare for main crops in the region BI, during 2000-2010 (2000 = 100%)

In terms of surface of vineyards on fruit in the Bucharest Ilfov, in the analyzed period 2000 - 2010 is ascertained important variations, the predominant is the decreasing trend in all categories vineyards, as follows:

- the total area decreases by nearly -77% in 2004, then increase slightly in following years and reaches in 2010 to - 31.7% compared to the reference year ;
- the surface with grafted vineyards on fruit have elevations up to 2004 with about 153% compared to 2000, followed by a period of drastic decline in 2010 with a value 94% lower than 2000, which demonstrates that these surfaces have become almost nonexistent.
- in the case of hybrid vine fruit, the lowest value is reached in 2004 with 83.7% less than in 2000, redressing their situation in the coming years, in 2010 showing a difference of about 30% compared to 2000; as shown in table 3.

Surface with vineyards on fruit in the region of BI, from 2000-2010 Table 3.

CATEGORIES OF VINEYARDS	2000	2001	2002	2003	2004	2005	2006	2007	2008	2009	2010
TOTAL- VINEYARDS ON FRUIT	100	93.5	99.4	86.1	23.8	70.7	69.7	70.4	72.6	67.7	68.3
VINEYARDS ON FRUIT GRAFTED	100	138.2	77.9	85.3	252.9	32.4	27.9	50.0	29.4	13.2	5.9
HYBRID VINEYARDS ON FRUIT	100	92.1	100.1	86.1	16.3	72.0	71.0	71.1	74.0	69.5	70.3
TABLE GRAPES	100	59.0	26.2	50.8	67.2	8.2	18.0	45.9	26.2	1.6	
WINE GRAPES	100	94.5	101.6	87.1	22.5	72.5	71.2	71.1	73.9	69.6	70.3

Source: Calculations based on data from Statistical Yearbook of Romania 2001-2010

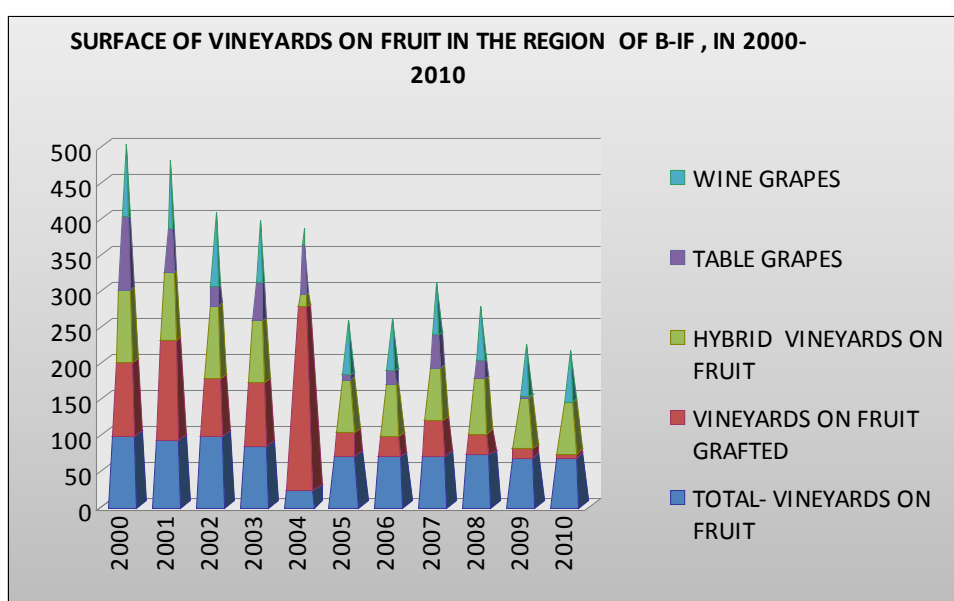


Figure 4. Surface with vineyards on fruit in the region of BI, from 2000-2010

Total fruit production in the region B-I during 2000-2010 Table 4.

FRUIT CATEGORIES	2000	2001	2002	2003	2004	2005	2006	2007	2008	2009	2010
TOTAL	100	90.41	72.26	117.4	90.6	111.5	110.1	29.6	45.9	51.4	41.6
PRUNES	100	85.47	64.84	87.7	48.7	97.2	107.1	9.8	24.4	19.3	25.9
APPLES	100	88.13	92.98	158	243.4	90.3	81	41.2	81	89.4	57.4
PEARS	100	67.28	74.19	198.8	113.8	94.7	82.5	5.3	14.7	11.8	66.4
PEACHES	100	68.73	43.32	70	76.4	60.6	107.8	39.3	46.6	32.2	10.9
CHERRIES AND SOUR CHERRIES	100	122.29	77.99	98.8	104.8	90.4	127.1	23.8	45.2	57.3	51.2
APRICOT	100	70.94	61.18	107.1	49.9	151.2	120.7	63.9	64.2	63.6	33.5
NUTS	100	91.91	88.73	150.9	38.7	153.8	127.7	3.5	2.3	3.2	12.1
STRAWBERRY	100	168.55	102.52	227.7	67.9	547.8	415.1	98.1	265.4	356.6	354.1
OTHER FRUITS	100	95.2	76.49	154.6	10.4	108.8	54.5	33.4	10.6	10.1	10.3

Source: Calculations based on data from Statistical Yearbook of Romania 2001-2010

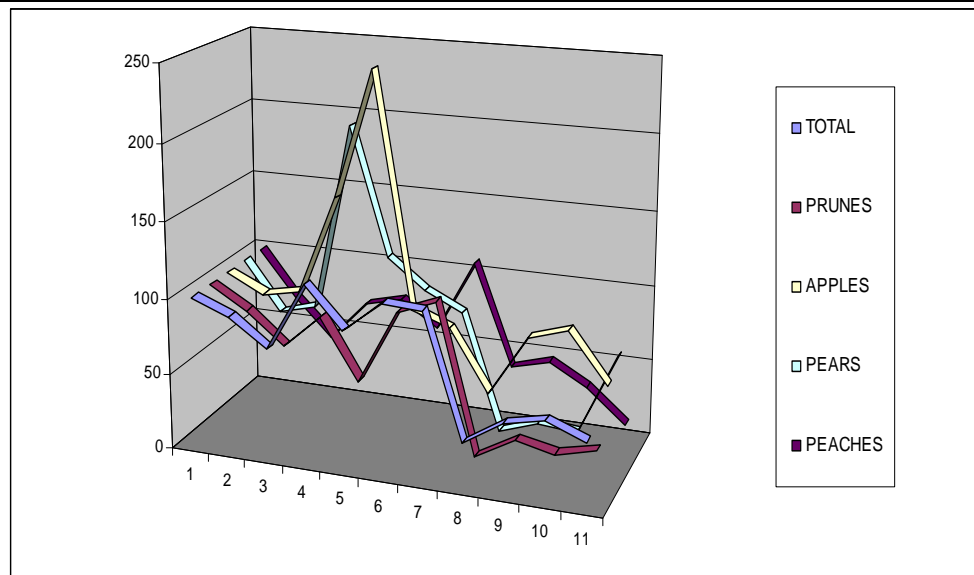


Figure 5. Total fruit production in the region B-I during 2000-2010

Total production of fruits has dropped drastically being influenced mainly by reducing fruit basin in the whole country and in the region studied and mainly because of the increase of importation of fruits.

Therefore in the Bucharest Ilfov total production in 2010 fell to about 60%, customizing can show fall in the categories of fruit: at apple of -42.6% , with -74.1% plum, at pear -33.6% , with about 90% peaches and nuts.

The only culture that had grown during this period is the strawberries in 2005 reaching a value of 5.5 times higher than in 2000 and in the 2010 by 3.5.

### CONCLUSIONS

Compared with the EU, which has an agricultural area registered to 41% of the total area, Romania has the advantage of a much larger agricultural areas relative to the total area (approximately 62% of the total area). Based on these data it results that our country has an important advantage compared to EU countries, namely a higher share of agricultural land in the land. In the period analyzed in the Bucharest-Ilfov region can be observed quite large differences at productions per hectare. Small farms are in continuous decline, but only one third of farms are compatible with the

EU, the rest providing only subsistence owners (according to National Institute of Statistics). Negative evolution of agriculture in the last years, due to poor financial possibilities of the peasants and the substantial reduction of aid granted by the state, requires, among other things, investment-oriented optimization of conditions offered by the natural environment and the application of research results obtained by agricultural research institutes located in the county. Especially, in the agriculture and rural development approach will be required to allow integration into the European Union's Common Agricultural Policy, the main measures are those designed to contribute to the shift from subsistence agriculture to commercial agriculture, the promotion of competitive agriculture and revival of the countryside, as an alternative socio-economic of the urban environment and other development and the diversification of economic activities, non-agricultural alternative to generate income.

#### **ACKNOWLEDGEMENTS**

This article was developed under the project “Doctoral scholarships to increase the quality of training young researchers in the field of agronomy and veterinary medicine” (contract POSDRU/88/1.5/S/52614), project cofinanced from European Social Fund by Human Resources Development Operational Programme 2007-2013 and coordinated by the University of Agronomic Sciences and Veterinary Medicine Bucharest..

#### **REFERENCES**

1. Own Calculation based on Romanian Statistical Yearbook 2000-2010
2. [http://www.mie.ro/\\_documente/regiuni/BI.ro.pdf](http://www.mie.ro/_documente/regiuni/BI.ro.pdf)
3. <http://www.insse.ro>
4. <intranetHTML/infoFILES/infoHTML/File/CCIBStudiuBI.pdf>